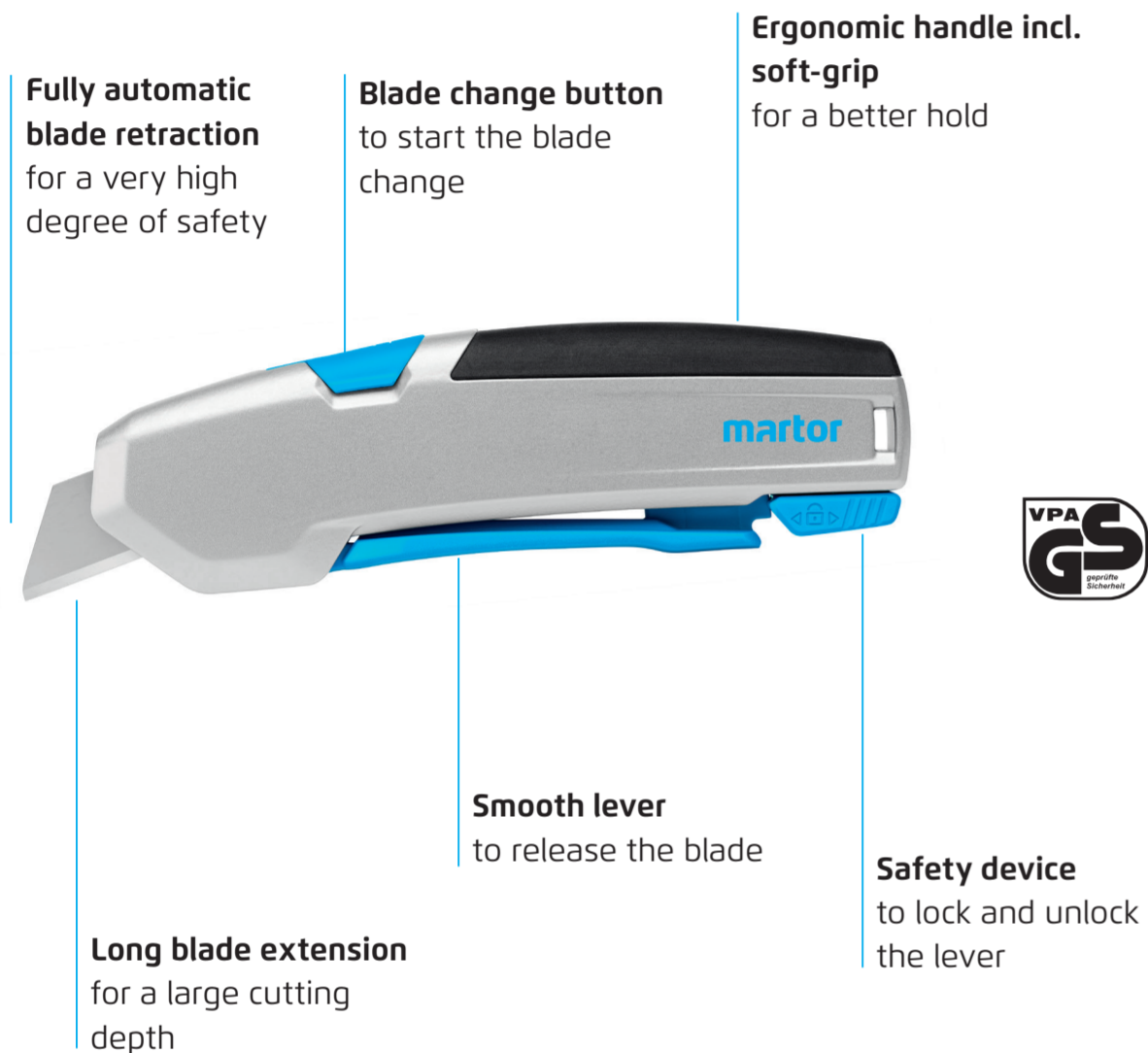


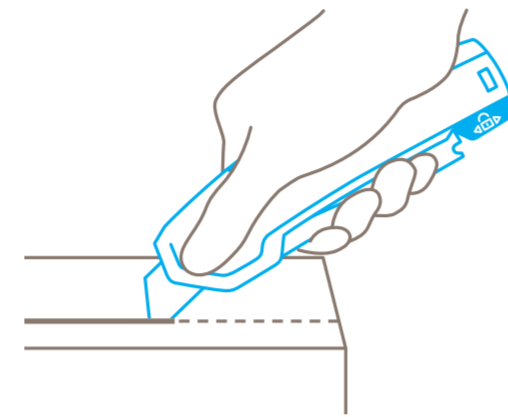
# SAFETY POSTER INSTRUCTIONS FOR THE SAFE HANDLING OF YOUR CUTTING TOOL

**martor**

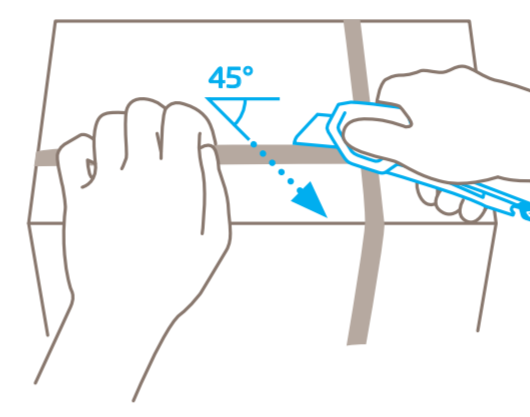
## SECUPRO 625



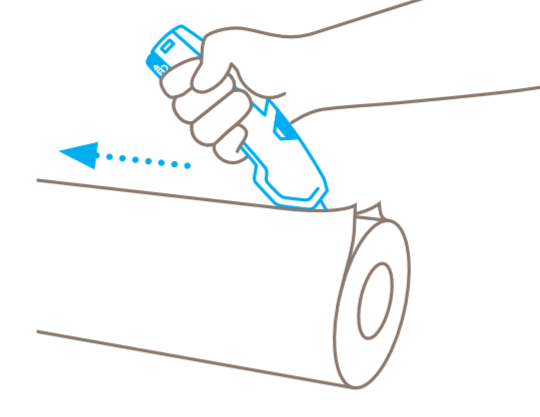
### USAGE



Unlock the lever by **pulling** the safety device. Squeeze the lever to extend the blade. Now you can cut.



For best results, cut plastic strapping band **diagonally** (at a 45° angle).

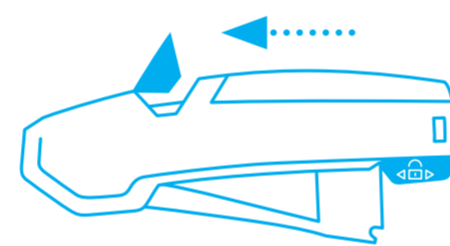


For **power cutting**, rotate the knife in your hand, push the lever and move it forwards with a high degree of pressure.

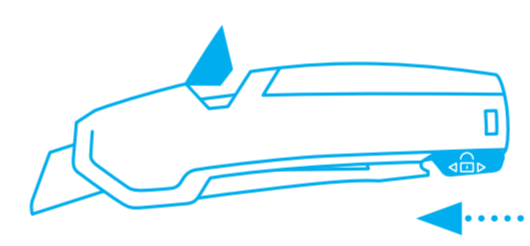


To secure the lever after cutting, push the safety device in the **forward position**. Thus the blade stays securely in the handle.

### BLADE CHANGE



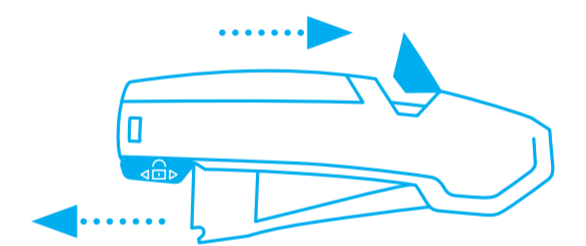
Pull the **blade change button** to the top and release the lever. Blade and blade holder will come out of the handle.



Secure the lever with the safety device and turn the handle so that the **transparent blade cover is facing upwards**.

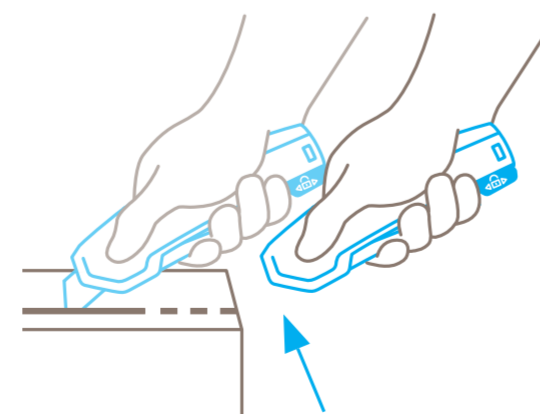


Now **reverse or change** the blade. Make sure that the blade is exactly positioned on the cams on the blade holder.



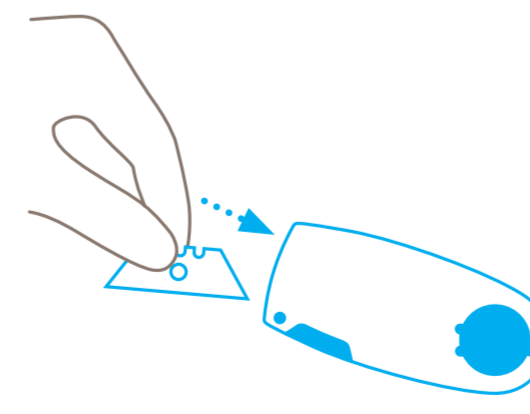
Slide the lock to the rear position, so that the **lever can be released** again. **Then** push the blade change button back into the handle and continue cutting.

### PROTECTION OF USER

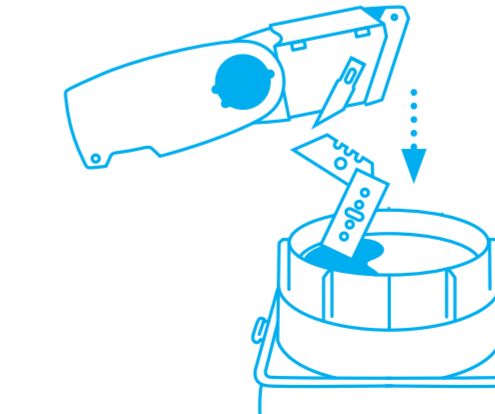


The blade immediately retracts into the handle the moment cutting ceases. Even when the lever is **still being squeezed**.

### DISPOSAL



Your **SAFEBOX** is the best place to store **used blades**.



When the **SAFEBOX** is full, **empty all contents** into your **USED BLADE CONTAINER**.

**Please note:** To ensure your product always functions flawlessly, regularly remove any impurities. For additional safety, we recommend wearing gloves.